

## 3-DIMENSIONAL GEOSPATIAL VISUALIZATION

Responding to building related crisis in today's world is more than just locating and assessing the building blueprints and associated diagrams. Today, facility managers and emergency responders need a near real-time situational awareness tool. 3D visualization enhances your situational awareness by providing multiple floors and embedded video feeds, etc.



**3-DIMENSIONAL  
VISUALIZATION**

[www.ds2corp.com](http://www.ds2corp.com)

# ENVISION THE USE OF THREE DIMENSIONS IN YOUR INTEGRATED SECURITY SOLUTION

Implementing 2D/3D geospatial technology into your asset information solution for complex assets and buildings, enables real-time "smart" management of those facilities. This includes asset information such as floor plans, building models, photos, integrated sensor feeds, personnel tracking, alert notifications and other data – documentation, fire diagrams, facility management information – all in one place.

# INCREASE PERFORMANCE. CONTROL COSTS. MANAGE RISKS. CONTROL YOUR WORLD WITH THE POWER OF 3D INTEGRATED SECURITY

Our 3D application framework provides the unique capacity to connect, correlate and collaborate all project data to a 3D model, inclusive of all your 2D geospatial data. Our solution can be utilized to plan new security solutions or manage existing integrated solutions to provide a cohesive realistic solution to complex security processes and needs.

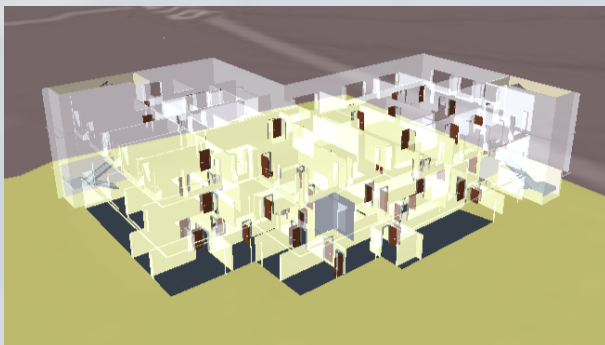


# NEW OR EXISTING BUILDINGS. OUR 3D APPLICATION FRAMEWORK IS THE HIGHER INTELLIGENCE SOLUTION.

## THE OLD WAY.

Providing clear, current and easily-accessible asset information is critical to staff. When the need for information is at its highest, standard 2D data and linked information is not readily discernible. Traditionally, a set of non-geospatially referenced floor plans or perhaps a geo-referenced 2D map are prepared and used within a facility management or security management solution. In reality, this data only provides a minute understanding of the building and the current ongoing activities.

Expanding use of 3D building models combined with georeferenced geospatial data, including camera, fire alarms, and other sensory data creates an opportunity to capture and unify information into a near real-time model of the building. This model can support the day-to-day operations and also provide an opportunity for planners to review their security assets for continual improvement and reliability.



# THE FUTURE: 2D/3D API and Custom Applications

DS2's 3D API works with building models produced by the leading BIM/CAD authoring applications.

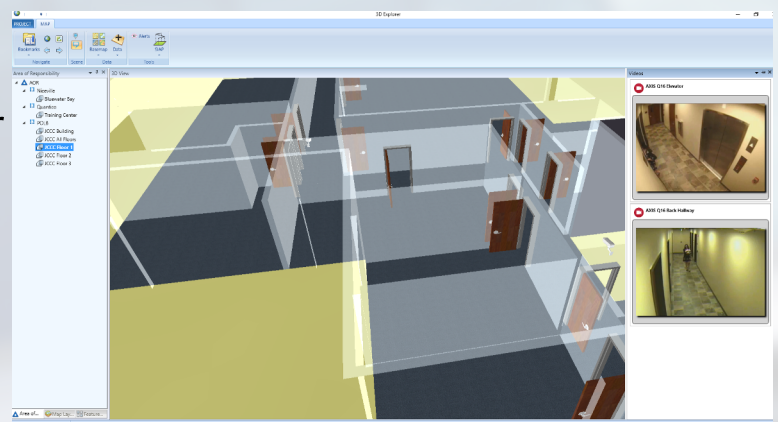
However, authoring software applications are typically not suited to having lots of additional data added. More importantly, the operator needs a simple solution to enter and access data they collect into a secure platform in a way that doesn't add cost or complexity.

DS2's 3D API ensures that all of the information is available from a single, easy-to-use source, enabling users to accurately plan, create, edit, and maintain facility information using powerful sensor integration linking, reporting, and visualization.

Operators can analyze data that has been associated with their buildings and integrates with other applications and information sources to provide a holistic approach to management. It's a simple, yet more intelligent way to manage your building data.

## BUILDING OFF OF INDUSTRY LEADERS

DS2 took advantage of ESRI's new ArcGIS Runtime Software Development Toolkit (SDK) for .NET to reinvent the way buildings are accessed and visualized. The interface and versatility allowed us to create unique tools and automate processes to provide a smooth map display combined with the latest in 3D visualization. This solution has enabled us to focus on the connection between perimeter security solutions and enhance the workflows users expect from proximity awareness, multiple sensory systems, associated documentation and other materials routinely not available at the time of need.



# MODELING YOUR WORLD

## KNOW MORE ABOUT YOUR EXISTING BUILDING

DS2 has worked with many as-built, building models, with accompanying information and data that must be housed within DS2's 3D API solution. We can help you to convert 2D CAD drawings into powerful 3D building models to enable your solution to improve visibility and drive greater efficiency.

The additional modeling process can be accomplished quickly with a standardized process to capture a finished floor space with each room or space. The emergence of new and improved 3D laser scanning applications producing point cloud data has also resulted in the technology becoming more cost effective, quick and accessible for existing facilities to use.

Our professional services extend to advising on the suitability of ease of conversion of existing building models.

