

# Geospatial Services

## GEOGRAPHIC INFORMATION SYSTEMS

### The World Around Us

The foundation of GIS provides an integrated visual approach to your quantitative and analytical analysis. It has the power to help organize things and is adaptive to your process. By embracing the use of GIS, the use of spatial data to drive your business needs enables more efficient, decisive, and collaborative decisions.

DS2 provides the expertise in enabling the hardware, software, and data to assist in the analysis and display of geospatial information. DS2 has experienced software engineers and analysts who can interpret and define the geographic scope of your project, assist in the collection of data, and develop and/or enhance your solutions that require GIS.

We provide professional services through the following offerings:

- Requirements Analysis and Design
- Project Management and Oversight
- Geospatial data(2D/3D) collection and analysis
- Development of custom solutions, including geoprocessing tools, and extensions
- A wide range of experience through standalone, enterprise and mobile solutions

## SOFTWARE ENGINEERING

### The Power of Maps

At DS2, we have a close working relationship with both ESRI and Autodesk. Our GIS developers have experience collecting and creating GIS data, maps, geoprocessing scripts, working with relational databases including Oracle and Microsoft SQL Server, and development of solutions the cloud, server, desktop, and mobile environments using application programming interfaces (APIs) for .NET and Java.

[Add discussion on our SDLC and agile methods.](#)

GIS Business  
Partners



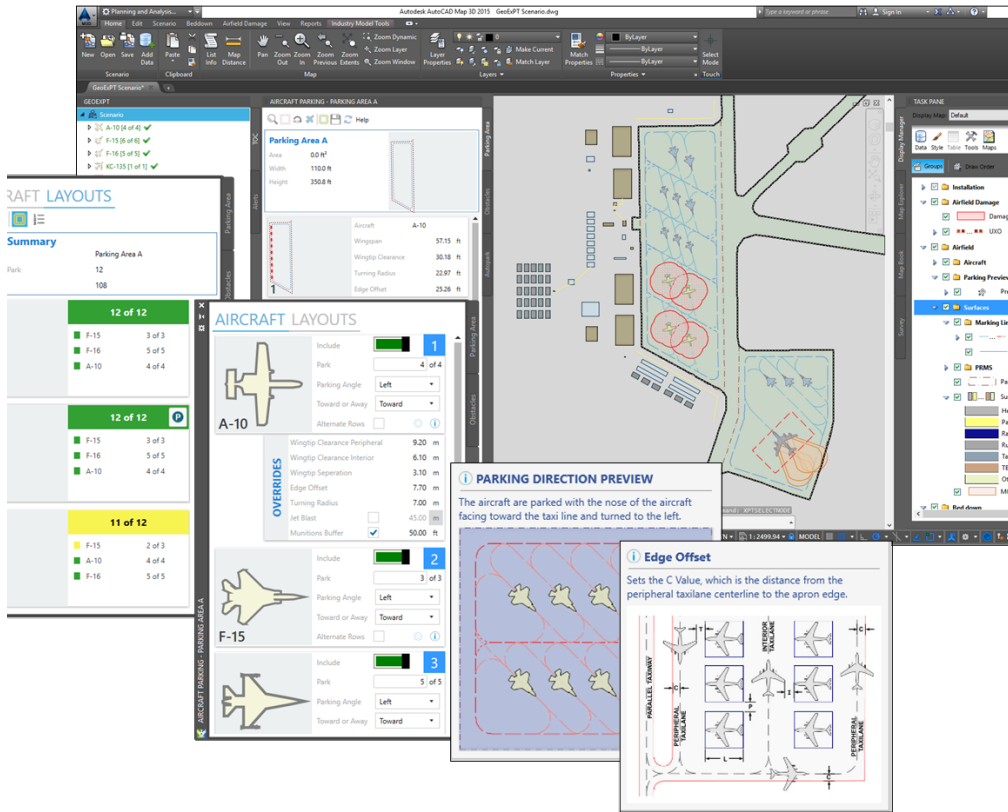
Partner Network  
Silver

**Autodesk**  
Authorized Developer

# GEOESPATIAL EXPEDITIONARY PLANNING TOOL (GEOEXPT)

## Supporting DOD Engineers with Expeditionary Planning

GeoExPT is a government-off-the-shelf (GOTS) application that provides the engineer with automated planning process tools to allow for the rapid development of base layout plans, automated parking, and airfield damage management. GeoExPT was originally developed based within the ESRI platform for nearly fifteen years. Based on government needs, it was fully migrated to the AutoDesk platform. GeoExPT is currently being used by the US Air Force, US Army, National Guard, NATO countries, and other federal agencies for contingency basing, humanitarian support, and active expeditionary missions.



# ENTERPRISE RESOURCE INFORMATION SYSTEM (ERIS)

## Security Situational Awareness and Emergency Management

The Enterprise Resource Information System (ERIS) provides a web-enabled interface for situational awareness for security and emergency management personnel. The system provides mapping, advanced geo-processing, document management, and security management capabilities in both 2D and 3D environments. ERIS allows operators to retrieve and share all pertinent information about the incident location and facilities required during an emergency operation.

