

Dynamic Software Solutions



**Engineered to
Exceed
Expectations...**

Who We Are

A Service-Disabled Veteran Owned Small Business

Dynamic Software Solutions, LLC (DS2) is a service-disabled, veteran-owned, small business (per U.S. Small Business Administration [SBA] guidelines) founded in April 2011. DS2's primary emphasis and specialization is in the development of Geographic Information Systems (GIS) and mapping solutions utilizing a variety of technologies built on leading vendor toolsets including those from both Esri and Autodesk. Our GIS engineers have readily automated business processes using geospatial technology to create and deploy GIS datasets, maps, and geoprocessing tools to build applications in the cloud, server, desktop, and mobile environments for over twenty years.

Our Niceville, Florida office is staffed with certified project managers and senior software engineers specializing in enterprise geospatial solution development, training, deployment and maintenance. Recent projects includes geospatial development for civil engineering, mission planning, infrastructure security, and emergency services solutions.



What We Do

Software Engineering and Geospatial Services

DS2 provides software engineering services and IT management to DOD, Federal, and commercial clients. DS2 develops cutting-edge software products using flexible agile methodologies combined with rigorous development processes to ensure solutions exceed customer's expectations while providing an exceptional value. DS2's principal software engineers and analysts have decades of experience in the implementation, optimization and support of geospatial solutions, and the design and development of custom applications operating in web, enterprise, desktop, and mobile environments for DOD, Federal, State, and commercial clients. In addition, DS2 specializes in the full range of geospatial solutions development; integrating hardware, software, and data essential to the analysis and display of geospatial information

We specialize in the full range of software solution development by integrating hardware, software, and data essential to the analysis and display of geospatial information. Our engineers readily automate business processes using various technologies to create and deploy data, maps, and geoprocessing tools to build applications in the cloud, server, desktop, and mobile environments. In doing so, our clients are able to leverage geospatial technology to answer diverse and complex questions. We also offer database design, requirements management, architecture and software development design, risk management, and a full range of help desk support services. All of our staff have extensive involvement with geospatially enabled solutions and architectures based on Esri, Autodesk, and open-source platforms.

Our staff routinely support military exercises that refine and enhance our solutions, supporting the warfighter with their critical mission requirements.

Professional Software Engineering Services

DS2 software engineers have a true passion for technology and application development. We pride ourselves on our technical prowess and our ability to deliver solutions that are technically superior and reliable while being efficient and cost effective in delivery. Our staff is experienced, trained, and certified to provide you the best solution no matter what your IT needs may be.

Our Technology Partners

The image displays a collection of logos for technology partners, arranged in a grid-like fashion within a white rectangular frame. The logos include:

- esri** Partner Network Silver: A globe icon followed by the text "esri" and "Partner Network Silver".
- Autodesk** Authorized Developer: The word "Autodesk" in a large, bold font, with "Authorized Developer" below it.
- PROXIMEX** From Tyco Security Products: A blue and yellow circular logo followed by the text "PROXIMEX" and "From Tyco Security Products".
- Microsoft** Partner: The Microsoft logo (four colored squares) followed by the text "Microsoft" and "Partner".
- ERIS**: A logo featuring a globe icon above the letters "ERIS".
- milestone**: A blue diamond shape with the word "milestone" below it.
- Solution Partner**: The text "Solution Partner" in a blue and black font.
- AXIS** COMMUNICATIONS APPLICATION DEVELOPMENT MEMBER: The text "AXIS" in a bold font with a yellow triangle above it, followed by "COMMUNICATIONS" and a grey box containing "APPLICATION DEVELOPMENT MEMBER".
- NASF** NATIONAL ASSOCIATION FOR SURFACE FINISHING: A circular logo with "NASF" in the center and "NATIONAL ASSOCIATION FOR SURFACE FINISHING" around the perimeter.

Geospatial Services

The Power of Maps

At DS2, we have a close working relationship with both Esri and Autodesk. Our GIS developers have decades of experience at the forefront of the GIS industry and can create and deploy GIS data, maps, geoprocessing scripts, and applications in the server, desktop, and mobile environments using Esri and Autodesk APIs for .NET and Java. DS2 has leveraged our knowledge and experience to develop high-quality solutions for the Air Force GeoBase program, delivering projects that have become programs of record while providing world-class global customer support.



DS2 can provide all of your GIS needs including:

- Geospatial Data Collection and Analysis
- Enterprise Geodatabase Support
- 3D Modeling
- Business Process Analysis
- Geospatial Data Collection and Analysis
- Enterprise Geospatial Solution Development
- Project Management and Oversight

Mission Planning Support

Mission Planning Application (MPA) Development

Our staff has over a decade of experience supporting the design, development, and maintenance of MPA's for Air Force, Navy, and Special Operations communities. We provided development services to an integrated software suite of mission planning and execution tools for time critical command and control of globally distributed special operations forces. These solutions facilitate time-intensive planning activities and provide enhanced situational awareness capabilities, which allow organizations to plan executable missions and routes, using Portable Flight Planning Software (PFPS)/FalconView and Joint Mission Planning System (JMPS), as well as numerous other third party tools. These tools include multiple map overlays, navigational and communication data transfer, weight and balance calculations, geospatial editors, targeting software, and other applications.



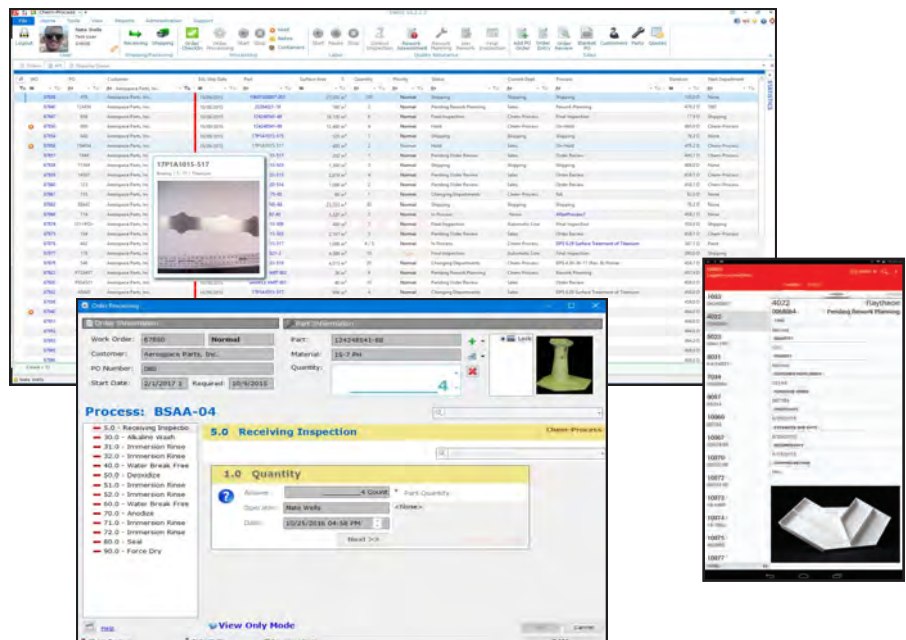
Physical Security Information Management Situational Awareness and Emergency Management

Real world dangers are all around us and DS2 provides real-time solutions for situation awareness. DS2 has a close working relationship with industry leaders in security information systems, developing large-scale physical security information management (PSIM) systems for both government and commercial clients.



Commercial Software Products High Quality Leading-Edge Solutions

DS2 focuses on the needs and unique requirements of the customer to ensure our products will be engineered not only to meet, but exceed their expectations. DS2 offers expertise in developing your design concepts and carrying it forward to the point of production. We offer design, development, operations and maintenance, training, and support services. Our success is measured by the value our clients receive from their software or other infrastructure investments.



DoD Architecture Framework (DoDAF)

Visualization Infrastructure for Stakeholders

All DoD projects are required to provide Enterprise Architecture (EA) documentation aimed at conformance and reuse of information and artifacts. DoDAF “views” are aimed at illustrating your solution at the 50,000 foot level or more complex views detailing the workflow and objectives of your solution.

DS2 can provide the architecture support you need. Whether you need enterprise or project level support, our team can provide DoDAF expertise. We can augment your team or take the lead to bring your vision to reality. DS2 brings the principles of architecture modeling to organizational and business analysis, system integration, and software development, with the skills and experience to ensure that your Enterprise Architecture is fully integrated and aligned in a way that provides lasting value to your organization.



Risk Management Framework (RMF)

Certification & Accreditation

Getting or keeping your information system on the Global Information Grid (GIG) is a task that requires an immense investment of time. Why? The Department of Defense requires information systems to map to more than 2,000 security controls and depending on whether your system integrates hardware and software you also have to navigate Defense Information Systems Agency (DISA) Security Technical Information guides (STIGs) compliance.

We can help. The DS2 team includes experts that have successfully navigated the legacy processes that are transitioning to the RMF process. We will augment your team and help map security controls as well as help build the various artifacts required to submit an Assessment and Authorization (A&A) package required to secure an Authority to Operate (ATO) for your project.

Building A&A packages is tedious and time-consuming work that our analysts excel at; they work with your Subject Matter Experts (SMEs) to tackle the documentation, while your team focuses on the development and/or maintenance of your system.





**Dynamic Software
Solutions, LLC**

**4400 E. Highway 20, Suite 511
Niceville, FL 32578**

**Phone: (800) 725-7304
Email: info@ds2corp.com
Web: www.ds2corp.com**